



Climax Wired BUS Security System

A complete wired security system offered by Climax

The Climax wired BUS security system is a comprehensive wired product line that provides sound protection suitable for a broad range of commercial application, offering another option besides Climax's wireless security solution.

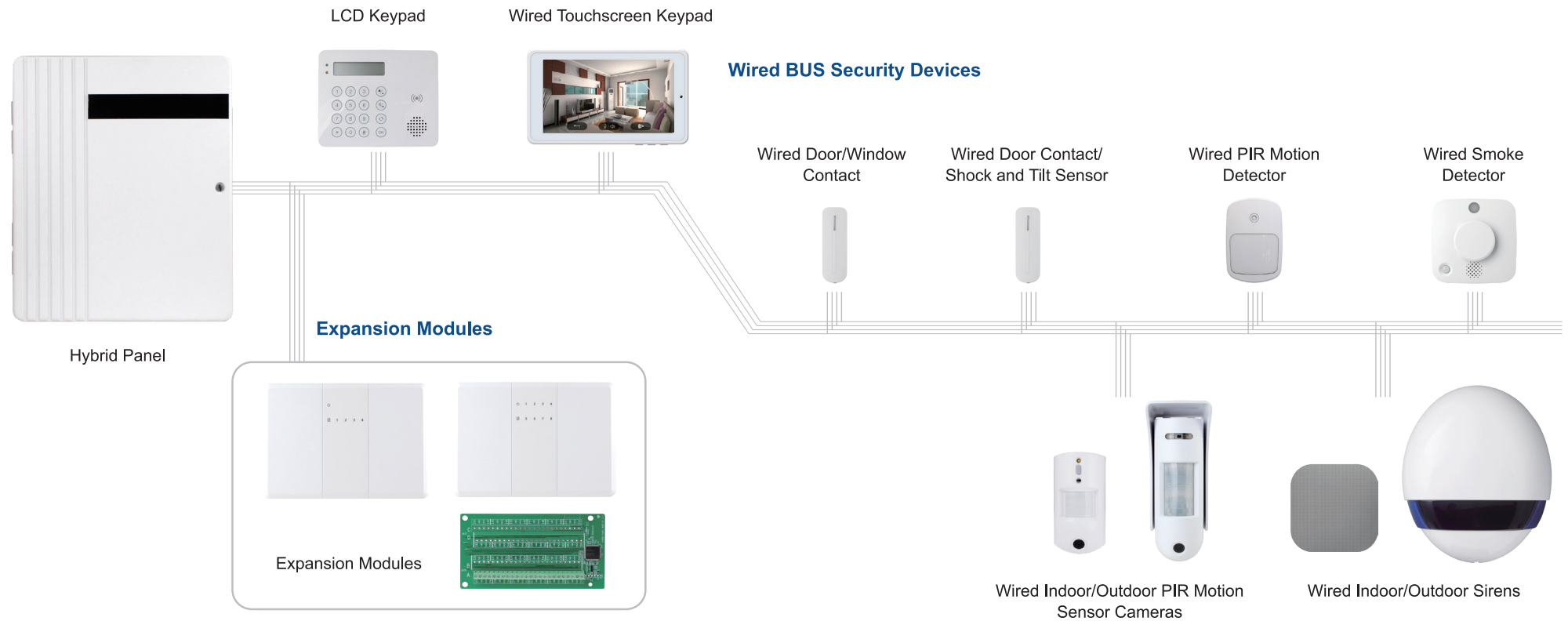
The newly introduced VST-892-BUS is a hardwired PIR motion sensor camera capable of sending captured images to the Hybrid Panel upon movement detection. In addition, VST-892EX-BUS is suitable for outdoor application. Climax also launches TSP-1-BUS, a hardwired Touchscreen keypad that provides access to arm/disarm/home arm the system and intuitive operation of the security system.

Other products from the wired BUS security system include Keypads, Motion Sensor Cameras, Motion Detectors, Sirens, Bell Box, Door/Window Contact and Expansion Modules. Through BUS connection, the wired BUS devices allow connection of several devices at once for enhanced flexibility and redundancy.



Wired BUS System Topology

Hybrid Security Alarm System



Control Panel

Hybrid Security Alarm System

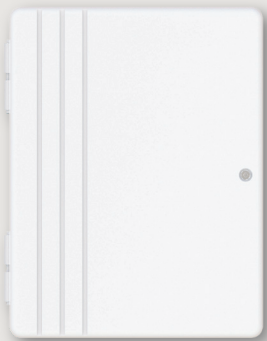
Hybrid Panel



Hybrid Security Alarm System

- A wired and wireless IP-based smart home security gateway with LTE capability
- 80 zones per areas, 8 areas, 640 zones in total
- 16 on-board zones available
- Number of BUS connected devices: 128
- Smart Automation that incorporates ZigBee/Z-Wave devices
- World-leading 2-Km RF Range that delivers RF communication range of 2km.
- 24-Hour Emergency Monitoring by incorporating emergency security devices
- Scalable System that integrates wired zone expansion modules and devices
- Visual Verification and Real-time Visual Monitoring by incorporating cameras
- Remote and Mobile Control via Vesta Home 5 web portal/App
- Power: 100-240VA, 50/60 Hz
- Total current consumption of wired zones, keypad and auxiliary output: 13.5V (Typical)
- EN50131 Grade 2 (wireless), Grade 3 (wired), Class II certified

Hybrid Panel Lite



Hybrid Security Alarm System

- Wire and wireless smart home security gateway
- 80 zones per areas, 8 areas, 640 zones in total
- Models with either 8 or 16 on-board zones available
- SF1 technology supports:
 - Transfer of HD images by RF network
 - Visual alarm verification in just 4 seconds for QGVA images
- Encryption for data transfer's security
- The case can be used for encasing extension module sensors
- External SMA input for Antenna
- Visual Verification and Real-time Visual Monitoring by incorporating cameras
- 24-Hour Emergency Monitoring by incorporating emergency security devices
- Remote and Mobile Control via Vesta Home 5 Web Portal/App
- Power: 100-240VA, 50/60 Hz
- Total current consumption of wired zones, keypad and auxiliary output: 13.5V (Typical)

Security Sensors

Keypad

KPT-35(N)-BUS Series



Keypad

- Installer and user menus for configuration
- Built-in siren to emit alarm sound
- Dual key function to trigger panic, fire or medical alarms
- Audible beeps to indicate entry/exit delays and other system status
- Wall mount tamper
- Input Voltage from Hybrid Panel: 13.5V DC
- Current Consumption: 24.4 mA (standby); 77.6 mA (maximal)

TSP-1-BUS



Touchscreen Keypad

- 7" high resolution color graphic touchscreen
- Panel status and event revision
- Automation control
- Video Verification of IP cameras and video phones
- Built-in microphone and speaker
- OTA firmware update capability
- Input Voltage from Hybrid Panel: 13.5V DC
- Current Consumption: 10 mA (standby); 411 mA (maximal)

Motion Detector

IR-35-BUS



PIR Motion Detector

- Lens support range of 12 meters and angle up to 90°
- Mounting height: 2.3-2.5 m
- Pet immunity enabled / disabled and sensitivity level adjustment by remote control setting
- Pet immunity up to 25 kilos
- Tamper protection against sabotage
- Temperature compensated sensitivity control
- Input Voltage from Hybrid Panel: 13.5V DC
- Current Consumption: 2.37 mA (standby); 14.4 mA (maximal)

Motion Sensor Camera

VST-892-BUS / VST-892HD-BUS



PIR Motion Sensor Camera

- Alarm image quality options: 1280x720 pixels (for HD model only), 640x480 pixels and 320x240 pixels
- Detection Range: 12 meters
- Horizontal Angle: 90°
- Installation height: 2.3-2.5m
- Pet immunity enabled / disabled and sensitivity level adjustment by remote control setting
- Anti-masking feature
- Night illumination capability (Warm white up to 5m; Infrared (IR) up to 7m outdoor; 10 indoor)
- Tamper protection to prevent unauthorized sabotage
- Input Voltage from Hybrid Panel: 13.5V DC
- Current Consumption: 0.87 mA (standby); 89.7 mA (maximal)

VST-892EX-BUS / VST-892EX-HD-BUS



Outdoor PIR Motion Sensor Camera

- Alarm image quality options of 1280x720 pixels (for HD models only), 640x480 pixels and 320x240 pixels
- Detection Range: 10 meters
- Horizontal Angle: 90°
- Installation height: 2.3-2.5m
- Pet immunity enabled / disabled and sensitivity level adjustment by remote control setting
- Anti-masking feature
- Night illumination capability (Warm white up to 5m; Infrared (IR) up to 7m outdoor; 10 indoor)
- IPX6 for outdoor usage
- Tamper protection to prevent unauthorized sabotage
- Input Voltage from Hybrid Panel: 13.5V DC
- Current Consumption: 0.83 mA (standby); 141.5 mA (maximal)

Siren

SR-35-BUS



Indoor Siren

- Siren output level is 95dB at 1 meter
- Capable of remote programming of siren volume
- Cover tamper protection prevents unauthorized removal and sabotage
- Regular supervision signals to check system integrity
- Compliant with CE requirement
- Input Voltage from Hybrid Panel: 13.5V DC
- Current Consumption: 0.84 mA (standby); 39.3 mA (maximal)
- EN50131 Grade 2, Class II certified
- INCERT-certified

Bell Box

BX-32-BUS



Outdoor Bell Box

- Siren output level is 104dB at 1 meter
- Capable of remote programming of siren volume
- Cover tamper protection prevents unauthorized removal and sabotage
- IPX5 waterproof and UV resistant housing
- Input Voltage from Hybrid Panel: 13.5V DC
- Current Consumption: 0.88 mA (standby); 54.8 mA (maximal)

Door / Window Contact

DC-23-BUS



Door / Window Contact

- Extension terminals for connection to wired devices
- Powerful magnet allows for an overall side-to-side gap distance of 28mm
- Enables home automation to turn on/off appliances
- Doubles as an universal transmitter
- Tamper protection to prevent unauthorized removal
- Input Voltage from Hybrid Panel: 13.5V DC
- Current Consumption: 0.64 mA (standby); 11.2 mA (maximal)
- EN50131 Grade 2, Class II certified
- INCERT-certified

DCSV-29-BUS



Door Contact / Shock Sensor

- Door/window opening or window glass break and shock detection
- Three adjustable sensitivity threshold levels (high, medium and low)
- Tamper switches for sabotage detection
- Remote settings of material and sensitivity
- Input Voltage from Hybrid Panel: 13.5V DC
- Current Consumption: 0.79 mA (standby); 8 mA (maximal)

Smoke Detector

SD-32-BUS



Smoke Detector

- Multiple optical sensors capable of preventing false alarms caused by cooking nuisance
- Polyurethane foam detection in fast moving fire and slow smoldering burn
- Reflective photoelectric sensor to detect smoke from any source, especially smoldering fires
- Support for interconnection function
- Self-diagnostics function to ensure optimal performance
- Audible Output: 85dBA at 3m
- Input Voltage from Hybrid Panel: 13.5V DC
- Current Consumption: 1.8 mA (standby); 120 mA (maximal)

Expansion Modules

Expansion Module

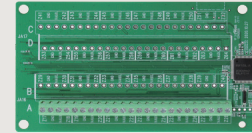
WEZC-8 / WEZC8B



8 wired zone expansion module

- Expansion of additional wired zones of 8
- Dual wall-mount & front cover tamper protection Plastic housing
- Rechargeable backup battery (for WEZC-8B only)
- Power Source: 1600 mAh Ni-MH battery pack; Battery Life: 35 hours* (WEZC-8B model only)
- Input Voltage from Hybrid Panel: 13.5V DC
- Current Consumption for WEZC-8: 9 mA (standby); 95mA (maximal)
- Current Consumption for WEZC-8B: 9 mA (standby); 85mA (maximal)
- EN50131 Grade 3, Class II certified

WEZ-12/24/36/48-BUS



Wired zone expansion module

- Expansion of additional wired zones of 12, 24, 36, 48
- Input Voltage from Hybrid Panel: 13.5V DC
- Current Consumption: 6 mA (standby); 31mA (maximal)

WEPC-1B



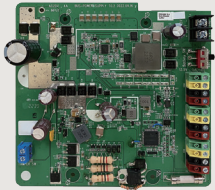
Programmable Output Expansion Module

- Expansion of additional 4 programmable outputs
- Wall-mount & front cover tamper protection
- Plastic housing
- Rechargeable backup battery (for WEPC-1B only)
- Power Source: 2300 mAh Ni-MH battery pack; Battery Life: 6 ~ 27 hours* (WEPC-1B only)
- Input Voltage from Hybrid Panel: 13.5V DC
- Current Consumption: 9 mA (standby); 240 mA (maximal)

Power Supply, Repeater and Interface Module

Auxiliary Power Supply Module

PWB-1-BUS



Auxiliary Power Supply Module

- Provides integrated power supply solution for wired system
- Equipped with 3 sets of 4-pin BUS terminals
- Designed to be installed inside AWO300 casing
- Capable of charging 12V 7Ah or 17.2Ah Lead-acid battery
- Input Voltage from Hybrid Panel: 13.5V DC
- Current Consumption: 40 mA (standby); 3 A (maximal)

Universal Interface Module

UIM-1-BUS



Universal Interface Module

- A universal interface module designed for the connection of wired devices to the Climax's Hybrid Panel via RS-485 BUS terminals
- Equipped with a set of 4-pin BUS terminals
- Allows for ground wiring and DC power supply connection
- Increases flexibility for wired security system
- Allows connected device to send alarm, tamper and anti-masking signals
- Inputs (Dry Contacts): GND, VCC, Input 1 (Alarm), Input 2 (Tamper), Input 3 (Anti-masking)
- Input Voltage from Hybrid Panel: 13.5V
- Current Consumption: 8 mA (Standby); 12 mA (Maximal)

BUS Repeater

ISL-1-BUS



Isolated Range Extender

- Protect the connected devices against short circuit downstreams
- Provides communication range extension of BUS system
- Amplifies and filters signal for connected BUS devices
- Boosts current for connected BUS devices
- Designed to be employed with Hybrid Panel and PWB-1-BUS
- Input Voltage: 8~14V (1 terminal)
- Output Current 0.5A (for each of 2 terminals)
- Extension Length: 4000 ft
- Input Voltage from Hybrid Panel: 13.5V DC
- Current Consumption: 110 mA (standby); 130 mA (maximal)

AMP-1-BUS



BUS Repeater

- Provides communication range extension of BUS system
- Amplifies and filters signal for connected BUS devices
- Equipped with 3 sets of 4-pin BUS terminals
- Designed to be employed with Hybrid Panel and PWB-1-BUS
- Input Voltage: 8~14V (1 terminal)
- Output Current: 1A (for each of 2 terminals)
- Extension Length: 4000 ft
- Input Voltage from Hybrid Panel: 13.5V DC
- Current Consumption: 5 mA (standby); 45 mA (maximal)



Climax Technology Co., Ltd.

Website: <http://www.climax.com.tw>

Email: sales@climax.com.tw

Copyright© 2024 Climax Technology Co., Ltd. All Rights Reserved.

May 08, 2024