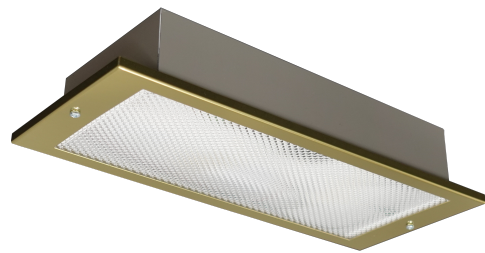
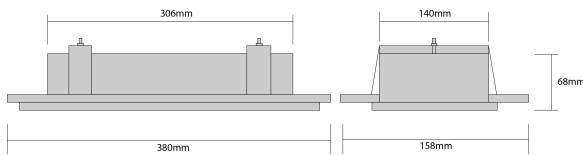


HOLLINSEND

HOLLINSEND LED Recessed Emergency Bulkhead, Maintained/Non-maintained, 3.2V LiFePO4 Battery, Brass, Prismatic Diffuser, Self Test



GENERAL DATA

Light Source	LED
Light Source Replaceable	Yes
Colour/Finish	Brass
Material	Metal
Diffuser Type	Prismatic
Diffuser Material	Polycarbonate
IP Rating	IP20
Mounting Type	Recessed
Warranty (Years)	5
Life Time Hours	30,000

DIMENSIONS & WEIGHT

Length (mm)	380
Width (mm)	158

BLE LIGHTING AND POWER LTD

Unit 3, Drake Business Park, Drake House Crescent, Sheffield, S20 7HT
 T: 01246 432325, E: sales@blelighting.co.uk, W: www.blelighting.co.uk

This document is uncontrolled if printed, all information is subject to change. Generated on 09/01/24

Depth (mm)	68
------------	----

Weight (g)	1434
------------	------

ELECTRICAL

Input Voltage (V)	220-240
-------------------	---------

Input Frequency (Hz)	50
----------------------	----

Wattage (W)	3
-------------	---

Classification	Class I
----------------	---------

Operating Temperature (°c)	0 to +40
----------------------------	----------

Power Factor	0.92
--------------	------

OPTICAL

Colour Temperature	5000K
--------------------	-------

CRI	80
-----	----

Beam Angle (°)	120
----------------	-----

Lumen Output Mains (lm)	250
-------------------------	-----

EMERGENCY

Battery Type	LiFePO4 3.2V
--------------	--------------

Battery Capacity	2.0Ah
------------------	-------

Battery Warranty (Years)	5
--------------------------	---

Recharge Time (hrs)	24
---------------------	----

Battery Replaceable	Yes
---------------------	-----

Mode Of Operation	Maintained / Non-maintained
-------------------	-----------------------------

Test Procedure	Self Test
----------------	-----------

Emergency Duration (Hrs)	3
--------------------------	---

Lumen Output Emergency (lm)	105
-----------------------------	-----

STANDARDS & APPROVALS

Manufactured in Accordance with	BS EN 60598-1, BS EN 60598-2-22
---------------------------------	---------------------------------

CE Mark	Yes
---------	-----

UKCA Mark	Yes
-----------	-----

WEEE Symbol	Yes
-------------	-----

Accredited Members	ISO 9001, LIA, ICEL
--------------------	---------------------

PACKAGING

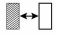
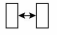
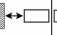

BLE LIGHTING AND POWER LTD

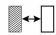
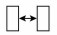
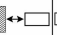
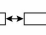
Unit 3, Drake Business Park, Drake House Crescent, Sheffield, S20 7HT
T: 01246 432325, E: sales@blelighting.co.uk, W: www.blelighting.co.uk

This document is uncontrolled if printed, all information is subject to change. Generated on 09/01/24

Packaging Length (mm)	390
Packaging Width (mm)	170
Packaging Depth (mm)	97

Spacing Tables

3HR EMERGENCY	ESCAPE ROUTE 2 METRES WIDE (1 LUX MIN)			
				
Mounting Height (M)	Transverse to Wall	Transverse to Transverse	Axial to Wall	Axial to Axial
2.5m	3.1	7.5	1.8	4.7
3.0m	3.6	8.4	1.8	5.0
4.0m	1.4	8.2	0.1	4.9

3HR EMERGENCY	OPEN (ANTI-PANIC) AREA (0.5 LUX MINIMUM)			
				
Mounting Height (M)	Transverse to Wall	Transverse to Transverse	Axial to Wall	Axial to Axial
2.5m	3.8	8.3	2.3	6.1
3.0m	4.2	9.7	2.5	6.4
4.0m	4.9	11.5	2.6	7.0

BLE LIGHTING AND POWER LTD

Unit 3, Drake Business Park, Drake House Crescent, Sheffield, S20 7HT
 T: 01246 432325, E: sales@blelighting.co.uk, W: www.blelighting.co.uk

This document is uncontrolled if printed, all information is subject to change. Generated on 09/01/24