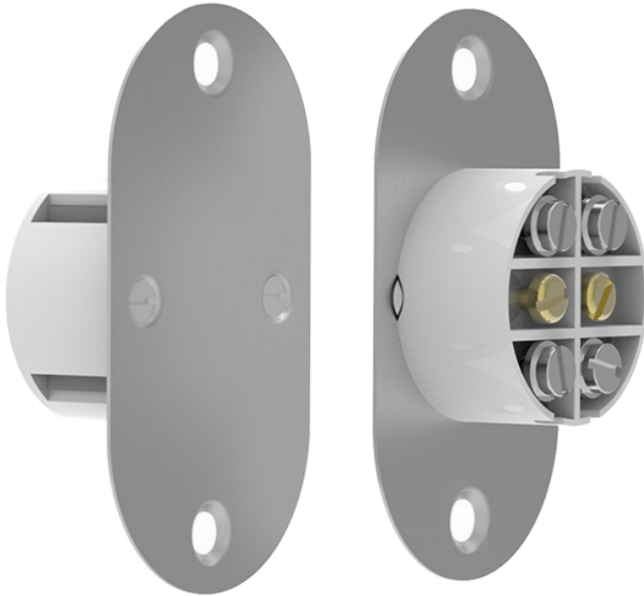
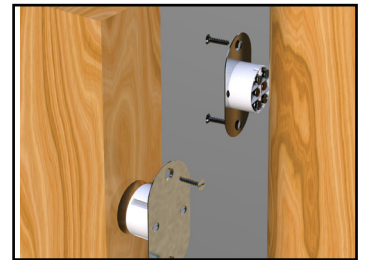


FC509/MT/2
Flush Magnetic Contact

CQR
First choice for quality



- Quick fit metal plated contact
- 6 Terminal
- Metal and high impact polymer construction
- EN50131-2-6 Grade 1
- Environmental Class II



Product codes

Code	Description
FC509/MT/2	Flush contact with metal plate

Technical data

Connections	6 Terminals	Voltage Range	12Vdc
Pull-in Gap	25mm	Contact Material	Palladium
Material	Metal / ABS	Colours	Stainless Steel
Contact Size	25.5 dia x 13mm	Standards	EN50131-2-6 Grade 1
Contact Face	57mm x 32mm	Environmental Class	II
Magnet Size	25.5 dia x 15mm		
Contact Face	57mm x 32mm		

rev. 2-7/2018



www.cqr.co.uk

info@cqr.co.uk

Sales: +(0)151 606 1000 Tech: +(0)151 606 6311

CQR Security Ltd, 125 Pasture Road, Moreton, Wirral, CH46 4TH, UK



Scan or click for online

