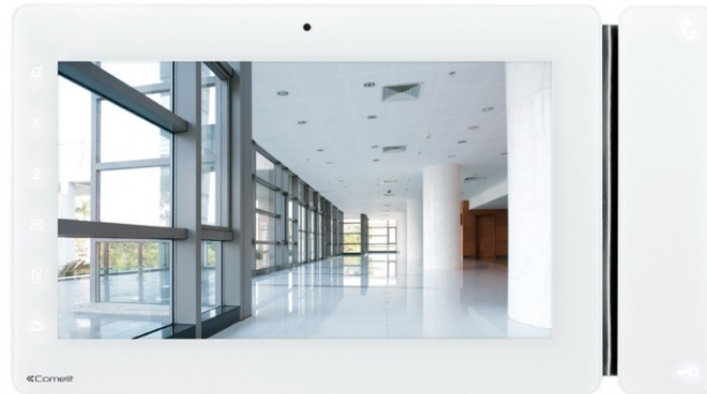




**6802W**

## 7-INCH MAXI MONITOR, VIP



7" 16:9 touch monitor with full-duplex hands-free audio. Management of Audio distribution and Energy consumption as standard. Audio, ringtone, colour and contrast adjustment. Equipped with a slot to house the micro SD Card. Ringtone can be customised. Equipped with video memory function and internal directory for the management of intercom calls. Management of external floor door call and call repetition as standard. Panic and alarm input. Sensitive touch commands with LED backlighting. The audio and door-opening command is always visible, whilst the others appear after touch or swipe contact. Also has button for self-ignition, selectable privacy or doctor button (with active red privacy indicator), and 2 controls for different uses. Door Open and New Message indicator lights. Flush or wall- mounted or desk base versions. 223x124x25mm. Compatible with H264 video format.

### AWARDS

DESIGN  
MILANO





**6802W**

**7-INCH MAXI MONITOR, VIP**

**GENERAL DATA**

|                     |                                  |
|---------------------|----------------------------------|
| Product height (mm) | 124                              |
| Product width (mm)  | 223                              |
| Product depth (mm)  | 25                               |
| Product weight (g)  | 700                              |
| Product color       | White RAL9003, base grey RAL7001 |
| Material            | ABS, Glass                       |
| Flush-mounted       | Yes, with a dedicated accessory  |
| Wall-mounted        | Yes, with a dedicated accessory  |
| Desk base-mounted   | Yes, with a dedicated accessory  |

**COMPATIBLE SYSTEMS**

|     |     |
|-----|-----|
| ViP | Yes |
|-----|-----|

**DISPLAY FEATURES**

|                     |                |
|---------------------|----------------|
| Size (inches) (")   | 7              |
| Aspect Ratio        | 16:9           |
| Touch screen        | Yes, resistive |
| Resolution (pixels) | 800x480        |
| OSD menu            | Yes            |

**AUDIO FEATURES**

|                          |                          |
|--------------------------|--------------------------|
| Microphone               | 4mm (Ø), Omnidirectional |
| Loudspeaker              | 80mm (Ø), 80 Ohm, 1W     |
| Technologies implemented | Full-Duplex              |



**6802W**

## 7-INCH MAXI MONITOR, VIP

### ELECTRICAL CHARACTERISTICS

|                            |  |
|----------------------------|--|
| Type of power supply       | PoE  |
| PoE power supply           | Standard IEEE 802.3af, Comelit PoE (56VDC) |
| Absorption in stand-by (W) | 1.8  |
| Maximum absorption (W)     | 3.4  |

### HARDWARE FEATURES

|  |   |
|--|---|
| Type of buttons                                      | Capacitive  |
| Service buttons                                      | Lock-release, Answer, Silent (Privacy), Menu, Messages, Door open |
| No. of programmable buttons for additional functions | 2   |
| Clamps   | CFP1 In1 AI Pan Out1 S+ S- 0V                                     |
| Removable terminals                                  | Yes   |
| Number of inputs (n°)                                | 1   |
| Number of outputs (n°)                               | 1   |
| Memory card supported                                | Micro-SD (not supplied)   |
| Communication ports                                  | RJ45 (Ethernet)   |

### SETTINGS

|                    |     |
|--------------------|-----|
| Loudspeaker volume | Yes |
| Microphone volume  | Yes |
| Ringtone volume    | Yes |
| Screen brightness  | Yes |
| Screen contrast    | Yes |
| Screen colour      | Yes |
| Screen backlight   | Yes |



**6802W**

## 7-INCH MAXI MONITOR, VIP

### NETWORK AND COMMUNICATION PROTOCOLS

|                       |   |
|-----------------------|---|
| Type of LAN network   | Ethernet 10/100 Mbit/s, IEEE 802.3, IEEE 802.3u (Fast Ethernet) |
| IP address assignment | Auto IP, DHCP, Static   |

### ENVIRONMENTAL AND COMPLIANCE FEATURES

|                                     |  |
|-------------------------------------|--|
| IP protection degree                | IP30   |
| Operating temperature (°C)          | 5 ÷ 40   |
| Operating humidity (RH max - %) (%) | 25 ÷ 75  |
| Environmental class                 | I  |
| Compliance and Certifications       | RoHS II - 2011/65/UE (EN 50581:2012), EMC 2014/30/UE (EN 61000-6-1:2007 , EN 61000-6-3:2007+A1:2011) |

### MAIN FUNCTIONS

|                               |     |
|-------------------------------|-----|
| Door opener                   | Yes |
| Self Activation               | Yes |
| Intercom calls                | Yes |
| Actuator control              | Yes |
| CPS call                      | Yes |
| Outside door call input       | Yes |
| Output for call repetition    | Yes |
| Silent mode (Privacy)         | Yes |
| Video memory                  | Yes |
| Door opening on call (Doctor) | Yes |
| Automatic answer (handsfree)  | Yes |
| Door open signaling           | Si  |
| Call forwarding               | Yes |
| Customisable ringtone         | Yes |
| Sending alarm calls           | Yes |
| Date/time display             | Yes |
| Sending e-mail on event       | Yes |



**6802W**

## 7-INCH MAXI MONITOR, VIP

### MAIN FUNCTIONS

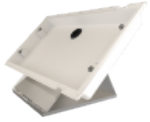
|                         |     |
|-------------------------|-----|
| Receiving ViP messages  | Yes |
| ViP anti-theft function | Yes |



**6802W**

## 7-INCH MAXI MONITOR, VIP

### ACCESSORIES



**6812**    **DESK BASE FOR MAXI MONITOR**

Desk base for desktop conversion of Maxi monitor.  
Dimensions: 4.13"x2.95"x4.33".



**6820**    **S2 & VIP MAXI MONITOR WALL SUPPORT**

Wall support for Maxi monitor in ABS UV resistant. White RAL 9003 colour.



**6817**    **FLUSH-MOUNTED BOX FOR MAXI MONITOR**

Flush-mounted box in black ABS. Dimensions: 212x115x50mm