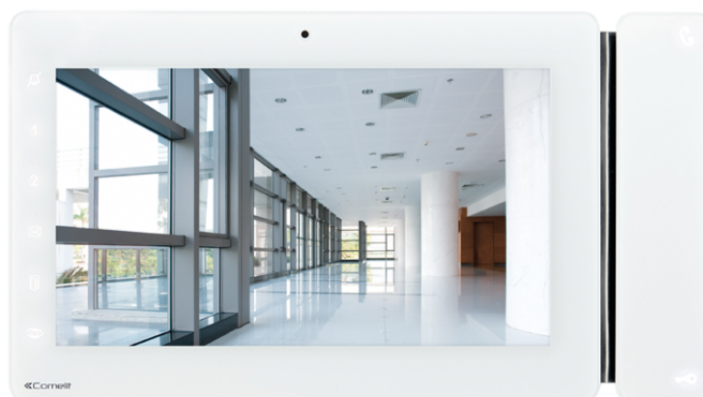


**6801W****2 WIRES MAXI DOOR ENTRY MONITOR**

SB1

Colour monitor for flush-mounting (on Art. 6817) or wall-mounting (on support Art. 6820) with 7" 16/9 screen, hands-free full-duplex audio and touch sensitive controls. Allows brightness, contrast and audio volume control, plus adjustment of the volume of the ringtone, which can be customised with a choice of different melodies. Equipped as standard with control buttons for lock-release and audio enable/disable with relative indicator LEDs, plus 6 further buttons for self-ignition, privacy service and other programmable functions. Manages floor door calls and call repeat as standard. Complete with 2 x 8-position DIP-switches for user code programming and button programming. Equipped with riser distribution terminal Art 1214/2C. The monitor can only be used in 2-wire Simplebus2 systems. Dimensions: 223x124x25mm.

AWARDSDESIGN
MILANO



6801W

2 WIRES MAXI DOOR ENTRY MONITOR

GENERAL DATA

Product height (mm)	124
Product width (mm)	223
Product depth (mm)	25
Product weight (g)	650
Product color	White RAL9003, base grey RAL7001
Material	ABS, Glass
Flush-mounted	Yes, with a dedicated accessory
Wall-mounted	Yes, with a dedicated accessory
Desk base-mounted	Yes, with a dedicated accessory

COMPATIBLE SYSTEMS

Audio/video Simplebus 2 with power supply art. 4888C	Yes
Audio/video Simplebus 2 with power supply art. 1210/1210A	Yes
Simplebus 2 audio/video kit with power supply art. 1209	Yes

DISPLAY FEATURES

Size (inches) (")	7
Aspect Ratio	16:9

AUDIO FEATURES

Microphone	4mm (Ø), Omnidirectional
Loudspeaker	80mm (Ø), 80 Ohm, 1W
Technologies implemented	Full-Duplex

ELECTRICAL CHARACTERISTICS

Type of power supply	Power supply from video door entry bus
Supply voltage	22÷34 VDC (Bus)
Absorption in stand-by (W)	1



6801W

2 WIRES MAXI DOOR ENTRY MONITOR

ELECTRICAL CHARACTERISTICS

Maximum absorption (W)	11.2
------------------------	------

HARDWARE FEATURES

Type of buttons	Capacitive
Service buttons	Lock-release, Answer, Silent (Privacy), Door open
No. of programmable buttons for additional functions	4
Clamps	L L - + CFP1 CFP2 S+ S- In1 In2
Removable terminals	Yes
Number of inputs (n°)	2
Number of outputs (n°)	1

SETTINGS

Loudspeaker volume	Yes
Microphone volume	Yes
Ringtone volume	Yes
Screen brightness	Yes
Screen contrast	Yes
Screen colour	Yes

ENVIRONMENTAL AND COMPLIANCE FEATURES

IP protection degree	IP30
Operating temperature (°C)	5 ÷ 40
Operating humidity (RH max - %) (%)	25 ÷ 75
Environmental class	I
Compliance and Certifications	RoHS II - 2011/65/UE (EN 50581:2012), EMC 2014/30/UE (EN 61000-6-1:2007 , EN 61000-6-3:2007+A1:2011)

MAIN FUNCTIONS

Door opener	Yes
Self Activation	Yes



6801W

2 WIRES MAXI DOOR ENTRY MONITOR

MAIN FUNCTIONS

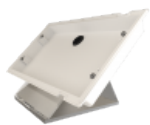
Intercom calls	Yes
Actuator control	Yes
CPS call	Yes
Outside door call input	Yes
Output for call repetition	Yes
Silent mode (Privacy)	Yes
Door opening on call (Doctor)	Yes
Automatic answer (handsfree)	Yes
Door open signaling	Si
Call forwarding	Yes
Multiple address	Yes
Customisable ringtone	Yes
Sending alarm calls	Yes



6801W

2 WIRES MAXI DOOR ENTRY MONITOR

ACCESSORIES



6812 DESK BASE FOR MAXI MONITOR

Desk base for desktop conversion of Maxi monitor.
Dimensions: 4.13"x2.95"x4.33".



6820 S2 & VIP MAXI MONITOR WALL SUPPORT

Wall support for Maxi monitor in ABS UV resistant. White RAL 9003 colour.



6817 FLUSH-MOUNTED BOX FOR MAXI MONITOR

Flush-mounted box in black ABS. Dimensions: 212x115x50mm